

FREE STANDING STOVES

TITAN EPSILON PROTON FALCON W

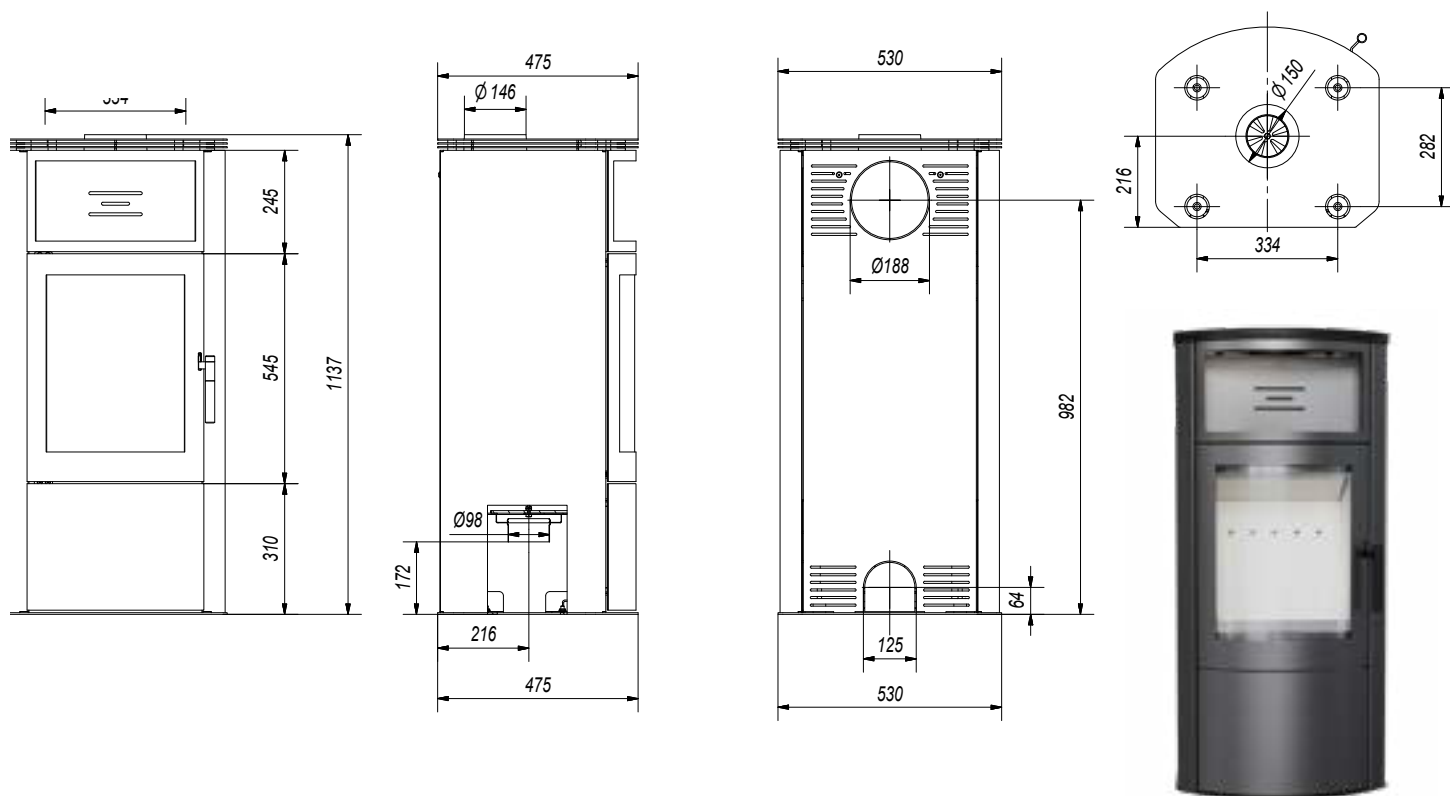


ADVANTAGES

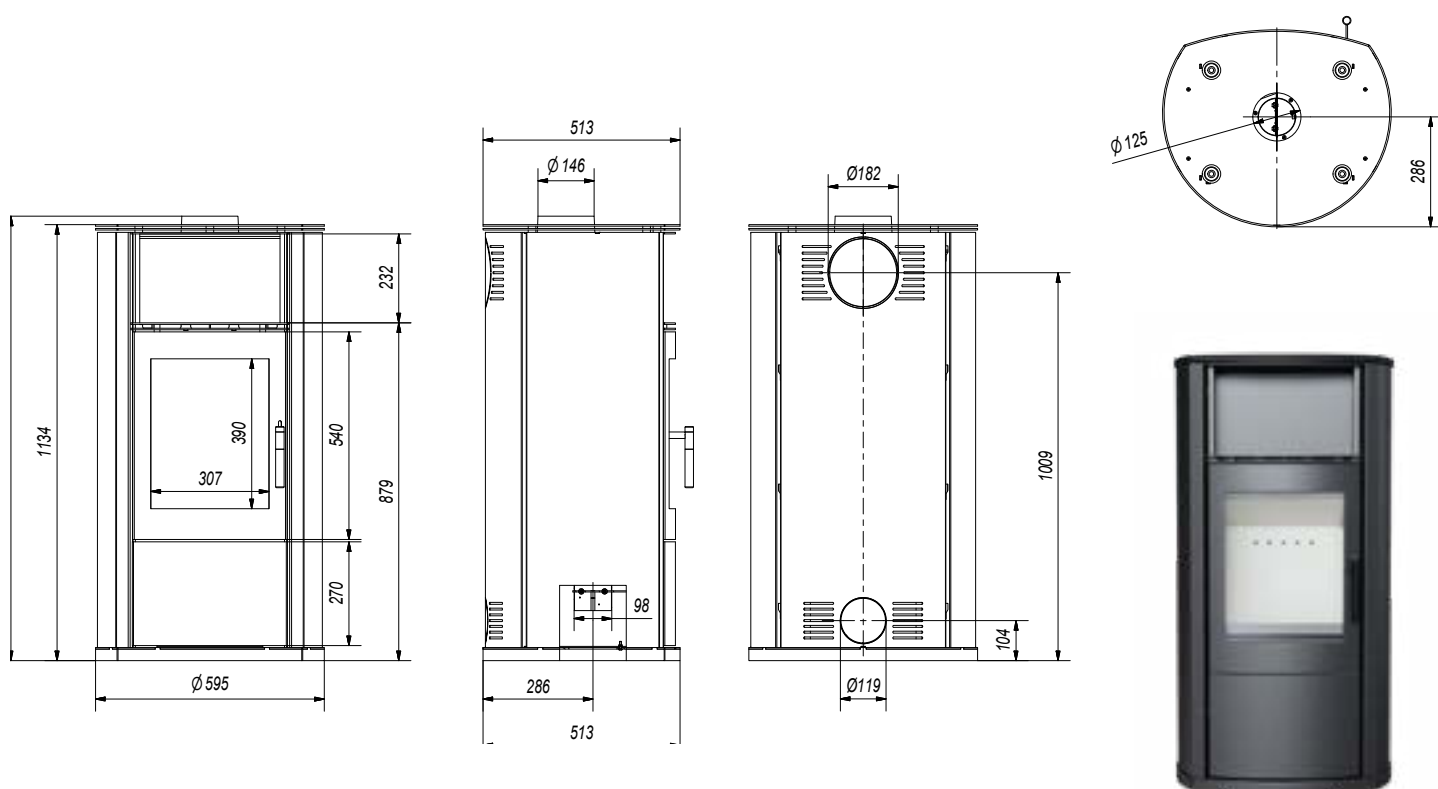
	TITAN	EPSILON	PROTON	FALCON/W
 kW	11	8	8	10
 < kW <	8 - 14	6 - 9	6 - 9	8 - 13
 ∅	150	150	150	150
 %	~ 80%	~ 82%	~ 82%	~ 82%
 L	300	300	300	300
 CO	0,1 %	0,08 %	0,08 %	0,07 %
 °C	270	255	255	215
 kg	139	143	143	-
	steel, Acumotte			
	seasonal hardwood (humidity max 20%)			



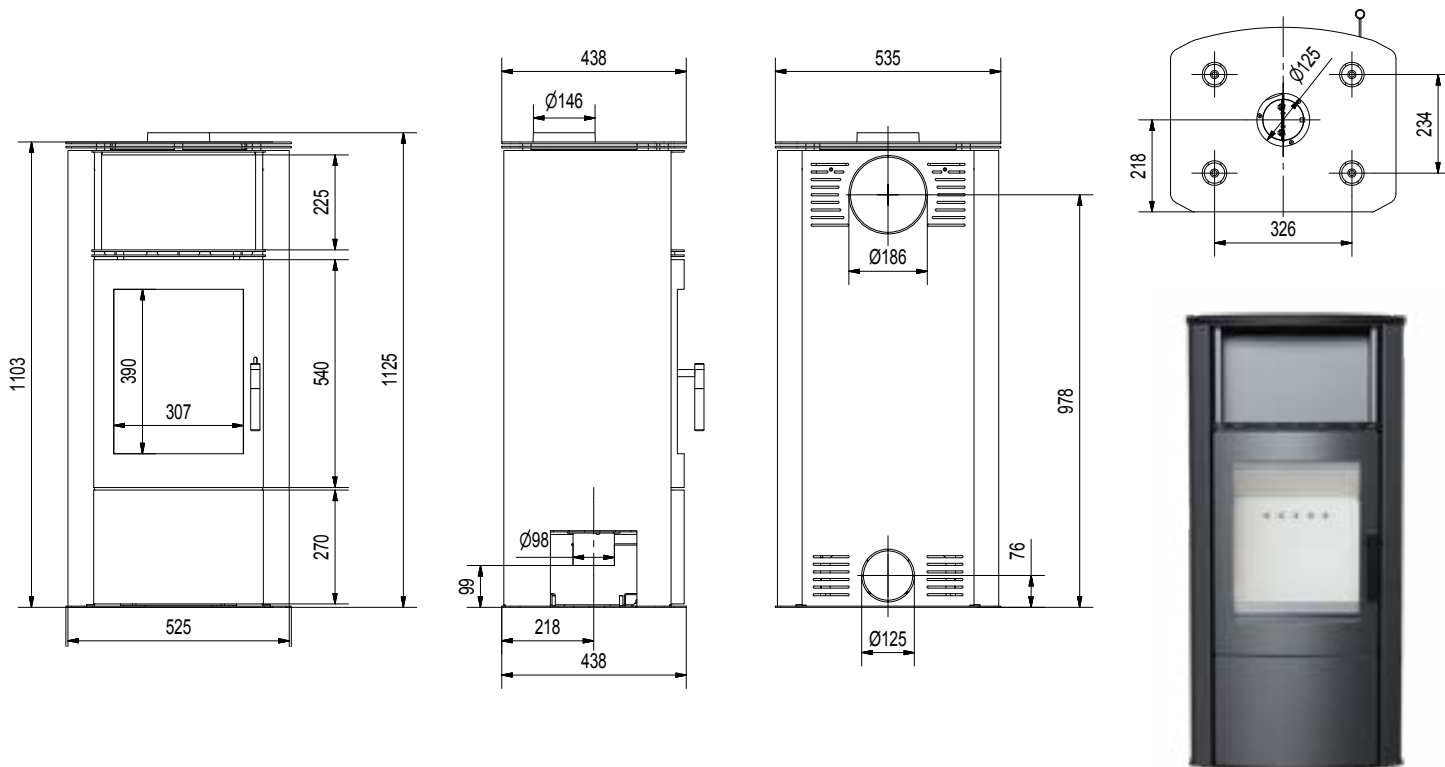
ADVANTAGES TITAN



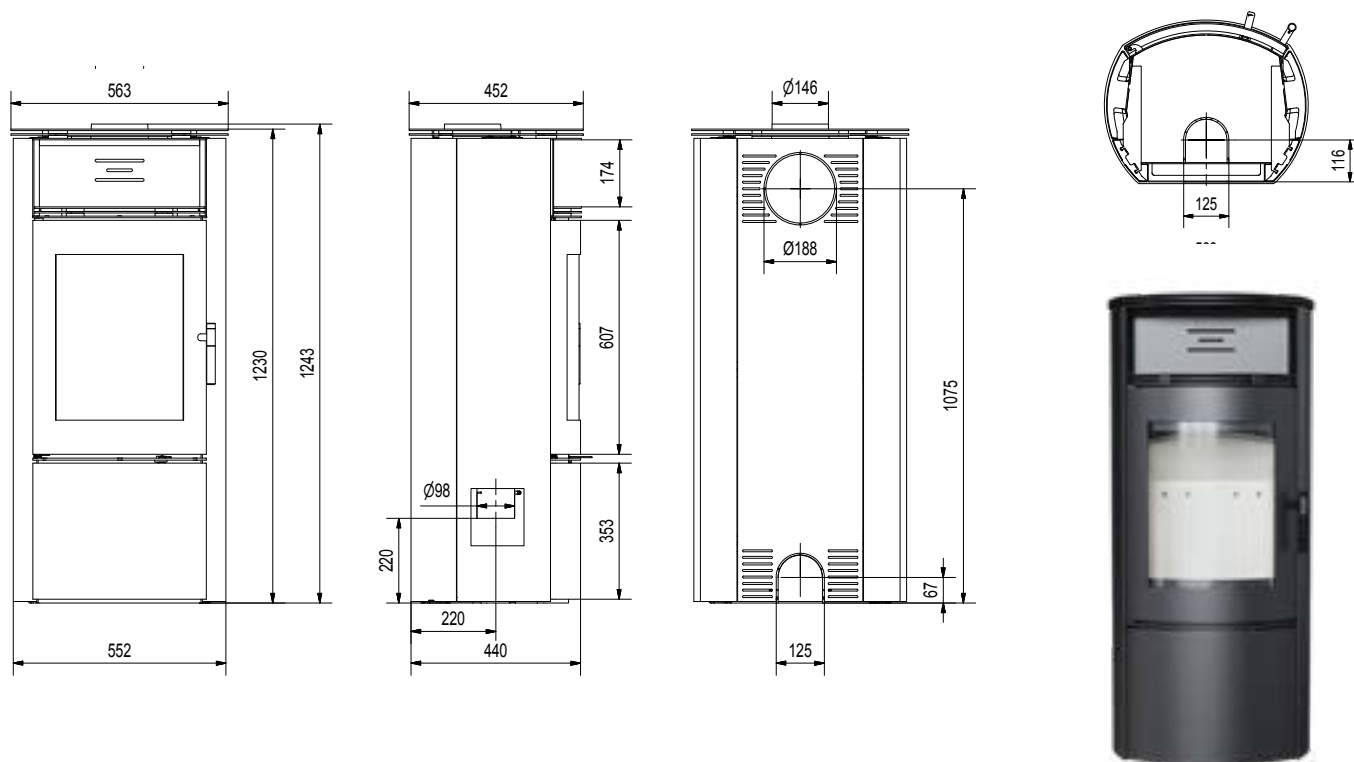
ADVANTAGES EPSILON



ADVANTAGES PROTON



ADVANTAGES FALCON/W



NEW STOVES ADVANTAGES

● MODERN DESIGN

The spacious front glass combined with the large combustion chamber significantly influences the attractive vision of the fire. Solid handle, makes it easy to seal the door. Thanks to this, the device works well in homes with recuperation. The practical shelf in the upper part of the stove can be used to heat the cup with coffee or tea. Putting the essential oils in this place will release the full range of fragrance.

● ECOLOGICAL COMBUSTION

The stove meets the criteria of Ecodesign and the restrictive BlmSchV 2 norm setting the maximum CO emission.

● MAXIMUM USE OF ENERGY

The interior of the stove is lined with Acumotte which perfectly contrasts with the stove, giving it a modern look. Full combustion on the dust thanks to two deflectors which extend the exhaust path. This process increases the efficiency of burning and guarantees better energy use. It also minimizes the emission of harmful substances to the atmosphere. Additionally a diaphragm that functions similarly to the deflector has been installed at the exhaust outlet, which further enhances the effects of the device.

Primary air is supplied to the insert thanks to the built-in 100 mm external air inlet. Air inlet is located from the bottom of the insert. Insert has a cover plate on the back wall and a hole in its base. Thanks to it the user can choose how to connect the external air kit. Air adjustment is done with a throttle adjustable by one regulator placed below the door. This solution prevents from improper usage. Whole mechanism works quietly and without fail.

In this insert there is triple air system of combustion chamber. Primary air which enables setting a fire is supplied under the grate. Secondary air - providing economic and ecological burning is supplied by holes on the back wall.

Additionally, this insert is equipped with Clean Glass System (air curtain), so the air is supplied directly to the glass through a system of channels located on the sides of the fireplace.

In this way oxygen is supplied to the upper part of the combustion chamber, where happens post-combustion of gases produced while combustion of wood. At the same time it reduces harmful CO emissions to the atmosphere.



● SAFETY ON THE HIGHEST LEVEL

Stove is equipped with a heat resistant ceramic withstanding temperatures up to 800°C. We offered by us glass certified quality and safety.

The body and the front of the stove is resistant to high temperatures through the use of high quality steel. They also ensure the stability of the entire structure.

Excellent tightness thanks to the solid welding made in shielded noble gas. Steel elements are laser cut with the help of modern equipment, and then they are bent on CNC benders.

● COMFORTABLE USE

Special profiled bottom plate of acumotte is used in this insert. Thank to that the chamber of the stove is bigger and larger amount of wood can be put inside. Additionally shallow combustion chamber was used, this results on low demand for heating power.

Movable grate and ash drawer enable to keep the insert clean.

The glazing of the insert remains clean thanks to the clear glass system. The air curtain separates the glass from the chamber. So it does not get dirty.

Stove has the ability to mount exhaust outlet both from the top and the back of the unit, making it easy for installation.

Under the fireplace there is an additional lockable chamber where the external air inlet system is hidden. The remaining space can be used, for example, to store a certain amount of wood. Opening the door is based on a click-clack system which does not require an additional handle. This makes the whole unit a coherent body.

PROTON

